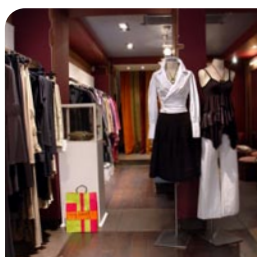


## omnidirectional laser scan module



[www.aures.com](http://www.aures.com)



### Omnidirectional Laser Scan Module

**PS 75** is a laser scan module that delivers outstanding scanning performances in an easy-to-integrate unit, for any existing equipment – or kiosk, including point of sale or service applications.

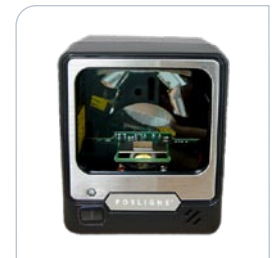
With its omnidirectional laser scan engine, **PS 75** performs 5 directions of scan field with a total 20 lines. Along with 650nm visible laser diode and 20cm long-range scan field, it drives up to 1,200 scans

per second ; it is supplied with multiple interfaces - keyboard, RS 232C, USB and wand.

# PS 75 speed & style

- User-friendly, ergonomic design
- High performance
- Multiple interfaces

MODEL	PS 75
Light source	650nm visible laser diode
Depth of Scan Field	0-200mm@ UPC/EAN 100%, PCS 90%
Number of Scan Lines	20
Scan Pattern	5 directions of scan field
Scan Speed	1200 scan per second
Minimum Bar Width	5mil @ PCS 90%
Print Contrast	30% @ UPC/EAN100%
Indicators (LED)	two-color LED (red and green)
Beeper Operational	Programmable tone and beep time
System Interfaces	Keyboard, RS 232C, HID USB, wand
<b>P O W E R</b>	
Input Voltage	5VDC+10%
Power	1.0Watts
Operating Current	200mA@ 5.0V
Laser Class	CDRH Class IIa, IEC 60825-1: Class 1
EMC	CE&FCC DOC compliance
<b>E N V I R O N M E N T</b>	
Operating Temperature	0 à 40° C (32° F- 104° F)
Storage Temperature	- 20° à 60° C (-4° F – 140° F)
Humidity	5%-95% RH (non-condensing)
Light Level	max. 2500LUX (fluorescent)
Shock	Designed to withstand 1m drops
<b>P H Y S I C A L</b>	
Dimensions (L x W x H)	70 x 64 x 68mm
Weight	175g
Cable	Standard 2m straight
Colour	graphite black



Specifications are subject to change without notice